

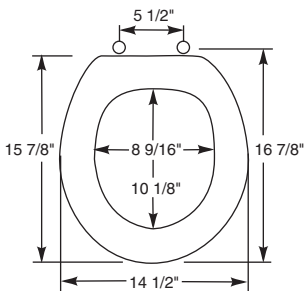


C O M M E R C I A L P L A S T I C S E A T S



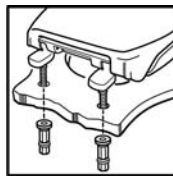
# 800BT

Seats shall be No. 800BT as manufactured by Bemis Manufacturing Co. Seats shall be commercial weight and injection molded of solid plastic. Seats shall be closed front with cover for round bowl and feature large molded-in bumpers. Seats shall have STA-TITE®, Commercial Fastening System™, featuring check hinges with 300 Series stainless steel posts and pintles. Color to be white.

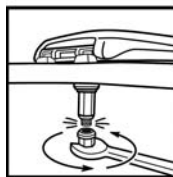


Ring thickness is 1/2"  
 Ring thickness including the bumper is 13/16"  
 Height of the seat with cover is 1-7/8"

## STA-TITE®



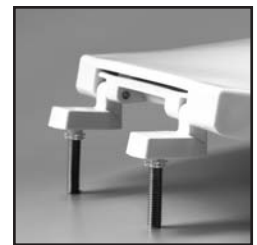
Finger-tighten fastening nuts.



Using wrench, tighten until lower portion shears off.



STA-TITE®, COMMERCIAL FASTENING SYSTEM™, ONE-PIECE INTEGRATED NUT AND WASHER



EXTERNAL CHECK HINGE WITH 300 SERIES STAINLESS STEEL BOLTS